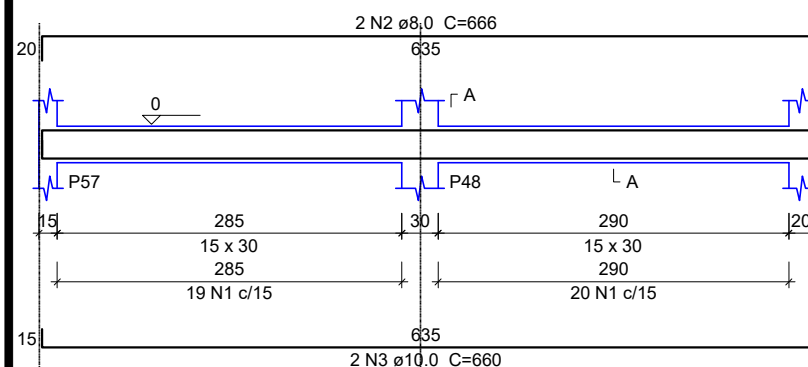
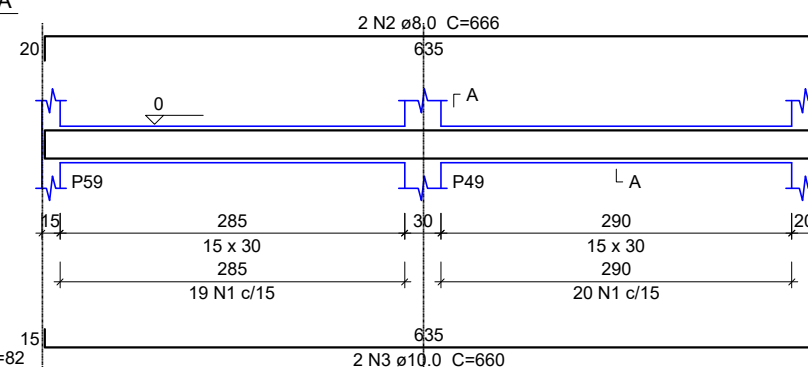


VB12  
ESC 1:50



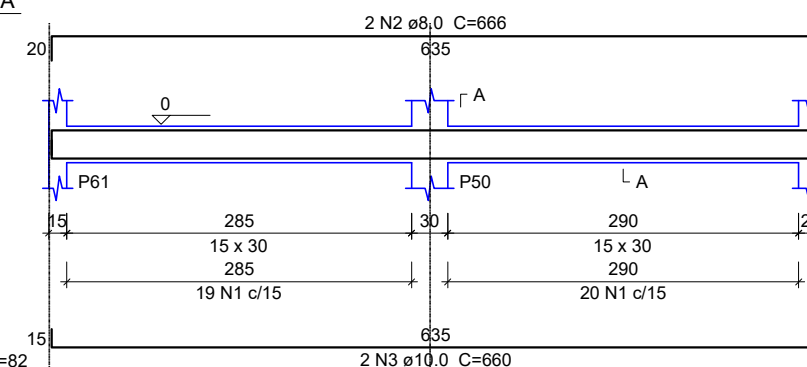
VB13  
ESC 1:50

SEÇÃO A-A  
ESC 1:25

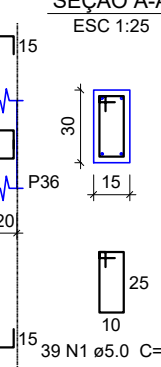


VB14  
ESC 1:50

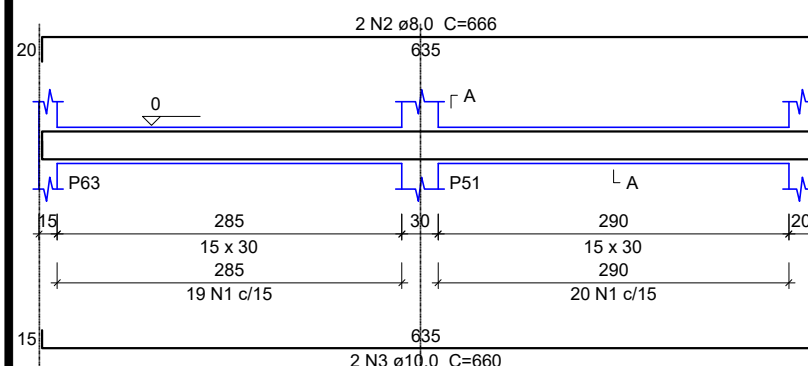
SEÇÃO A-A  
ESC 1:25



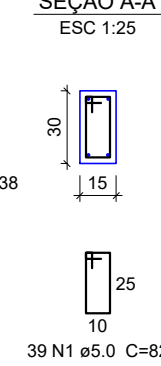
SEÇÃO A-A  
ESC 1:25



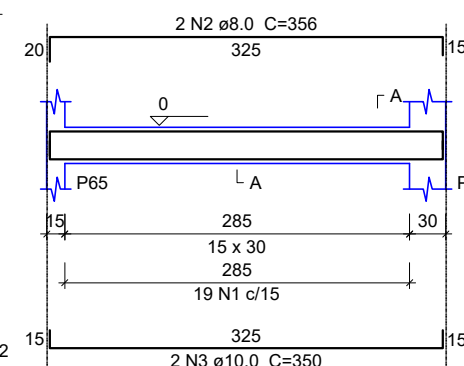
VB15  
ESC 1:50



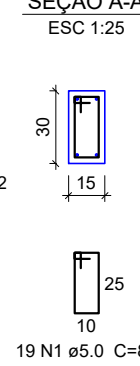
SEÇÃO A-A  
ESC 1:25



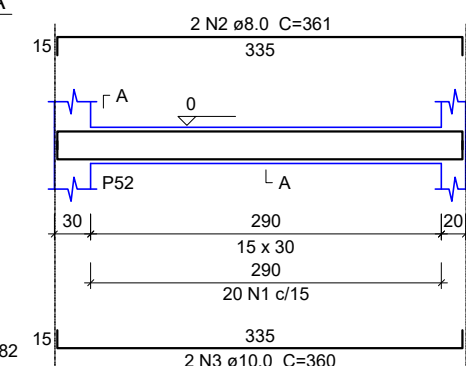
VB16  
ESC 1:50



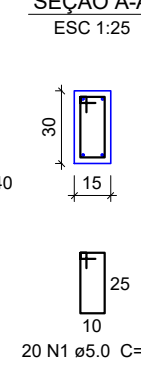
SEÇÃO A-A  
ESC 1:25



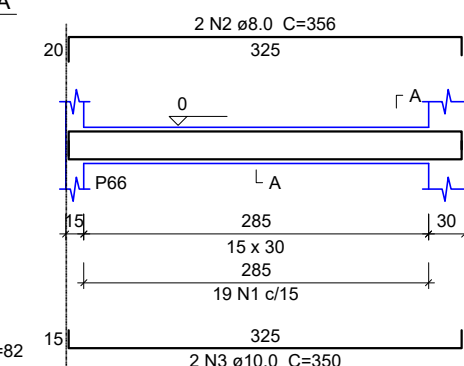
VB17  
ESC 1:50



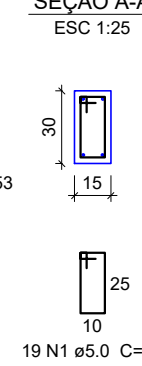
SEÇÃO A-A  
ESC 1:25



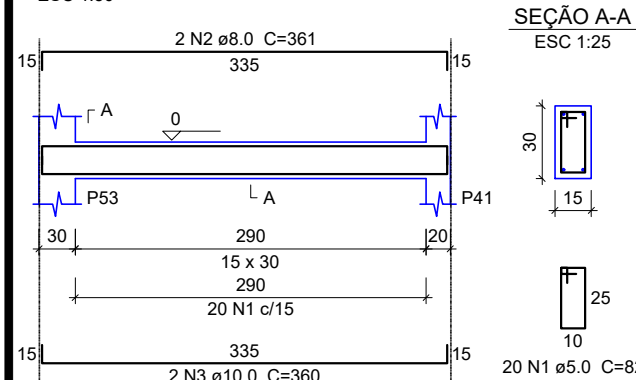
VB18  
ESC 1:50



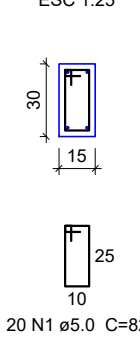
SEÇÃO A-A  
ESC 1:25



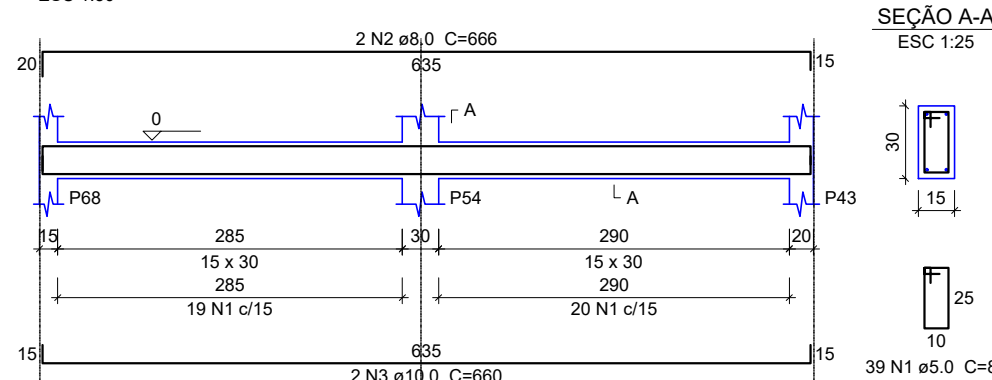
VB19  
ESC 1:50



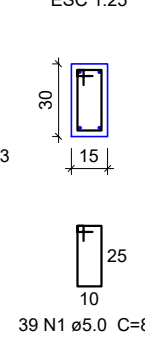
SEÇÃO A-A  
ESC 1:25



VB20  
ESC 1:50



SEÇÃO A-A  
ESC 1:25



# VIGA BALDRAME ESC: 1/125



**PREFEITURA MUNICIPAL DE VÁRZEA GRANDE**  
Av. Castelo Branco, Espaço Municipal, 2500 - Centro Sul, Várzea Grande/MT  
CEP 78125-700 - Fone/Fax: 65 3688 8000  
**LOCALIZAÇÃO:** RUA SÃO PAULO (LOT. NOVA VÁRZEA GRANDE)  
CEP: 78135-730 VÁRZEA GRANDE - MT

**PROJETO:** PROJETO ESTRUTURAL  
**OBRA:** REFORMA E AMPLIAÇÃO DA EMEB JAIME VERÍSSIMO DE CAMPOS JUNIOR "JAIMINHO"

**DATA:** JULHO/2021  
**UNIDADE:** METRO

**AUTOR DO PROJETO:** MATHEUS MARCANZONI LEITE  
ENGENHEIRO CIVIL CREA - MT 042157

**FOLHA Nº:** 04/17